

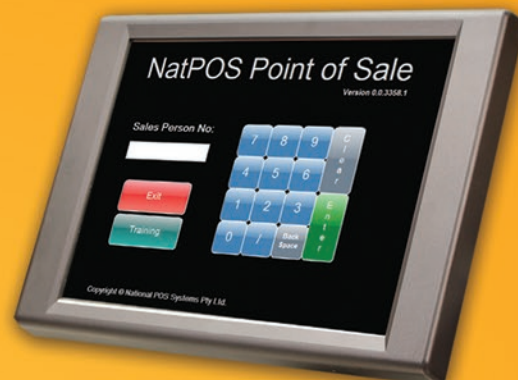


# natPOS

a la carte



## POS Main Menu



Customised Menu Control, allowing Forced Preparation Prompts & On Demand Selection Menu's, with complete Table Management.

## "Clear & Fast Order Processing"

Professional & Fast, Food & Drink Management, Simplifies Cashier Operation & Satisfies your Customers.

Quick Service (Fast Food) Mode &/or Table Management Mode, provides multi-Configurations to suit store specifics. Ideal Solution for Deli/Cafe, Seafood Fish & Chips & any High Volume Fast Food Outlet.

## Loyalty

Customer Loyalty provides points for purchases, integrated redemption and customer interactivity that generates repeat spending at a higher average spend.



## Integrated EFTPOS

- ✓ Speed
- ✓ Security
- ✓ Accuracy
- ✓ NatPOS Group Discounted Rates



## Messaging Control

Forced and On-demand Condiment Selection

Free Text Messaging



# natPOS a la carte



Simplicity with Flexibility is exactly what you'll receive with natPOS A La Carte

Order Print Samples



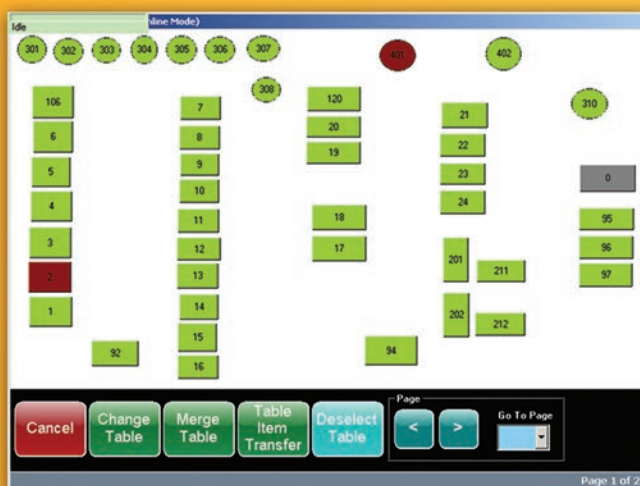
Kitchen  
Take Away  
24/08/11 02:08 PM  
-----  
Order #109  
-----  
1 CALAMARI FRITTI  
1 LAMB RACK  
\*Med  
Type any Special  
-----  
CASHIER : 111

Dual colour Dot Matrix

Cafe  
Take Away  
24/08/11 03:22 PM  
-----  
Order #203  
-----  
1 CAPPUCCINO REG  
\*Forte  
\*Soy  
\*3 Sugars  
-----  
CASHIER : Cashier 1

Fast thermal print

On-Demand Order - Print, change or reprint options



## Table Management

Centralised table management across all POS with offline local mode. Clear table identification by status colour change & options to change, merge and split tables.



Bill print

## CCTV Integration



View sales transactions with video footage at the POS with show customer option.

## Hand Held



Online wireless connection tablet, operates full POS in the palm of your hand. Light weight with a long battery life and rugged drop resistance case. Your floor orders are now mobile.

1800 806 199 [www.natpos.com.au](http://www.natpos.com.au)

**NATIONAL  
POS SYSTEMS**