

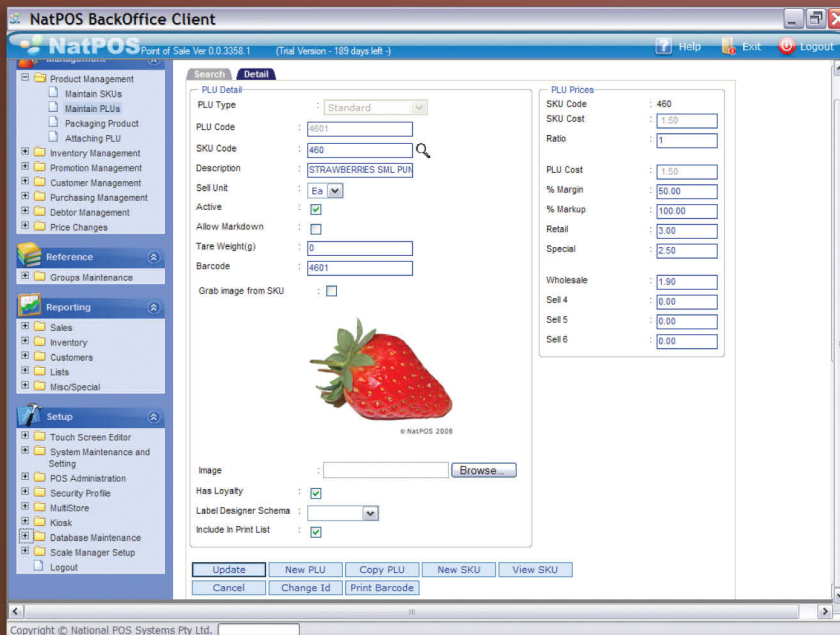


natPOS



office

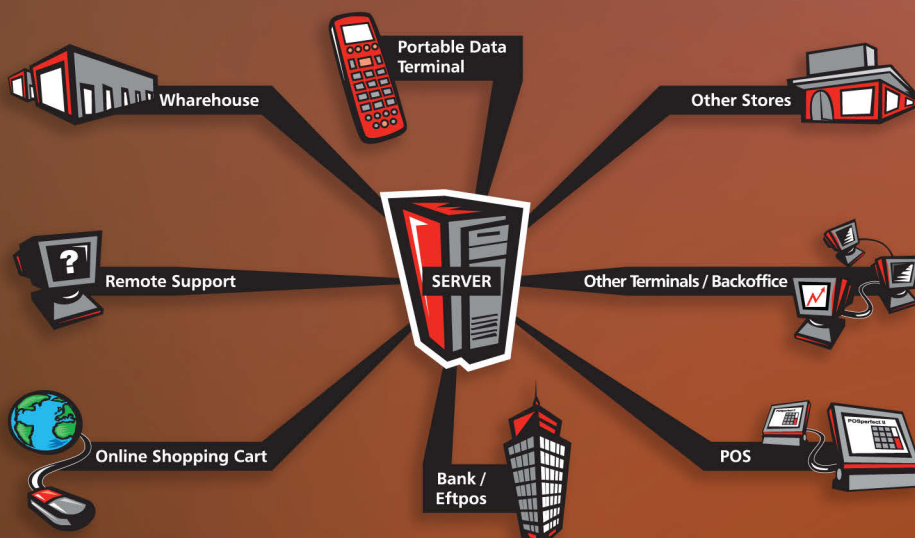
Comprehensive & innovative web-based technology seamlessly managing all natPOS front-end POS, Grocer, Fresh, A La Carte & Retail



Reporting

- > True Profit Reporting, managing all fresh variations, inc: variable weight barcodes, multi size & markdown packaging.
- > Extensive Sales Reporting by Department, Group, Brand, Class, SKU, Supplier & Best/Worst.
- > Precise Inventory Management, from automated stocktake by location to Purchase Order controlled ordering & Re-order assistant + ratio controlled multi-PLU to SKU.
- > Excel direct interface, reporting also by PDF & Word.
- > Variable End of Shift set-up, with Pick-ups, Floats & CAID.

Communications Diagram



Features

- > .Net Application, web based technology, superior development language.
- > Flexible Architecture allowing scalability – Future Growth.
- > Product packaging & attaching for recipe & packaged promotions.
- > Wireless Mobility for real time inventory & product control.
- > User Friendly Import / Export Menu
- > Scale Manager, seamless integration to Labelers for pre-pack label management & Nutritional Template setting.
- > Debtors Management, Invoicing – Statements & Credit Controls.
- > Customer Price Matrix, automatic discount groups & price levels.
- > Flexible Promotions & Price Controls.
- > Real Time Reporting & Maintenance.
- > Online Help Assistant provides a full library of immediate help, that is updated each version.
- > Multi-Store control provides centralized stock, customer & sales controls.
- > Advanced warehousing for stock distribution & Product maintenance.
- > Unlimited Client, Multi User Capability.
- > Multi Level Security hierarchy
- > Browser Based Product Group Maintenance.
- > Professional Label Management, Shelf & Product Barcode labels to A4/3 Signage & Shelf Talkers.
- > PLU Cost Price/Ratio/Mark-up, Ex & inc GST.
- > Continuous Evolving Program with Regular Updates.
- > Extensive Functionality covering 4 Key Business Sectors, Grocery, Fresh Food, Hospitality & Retail.

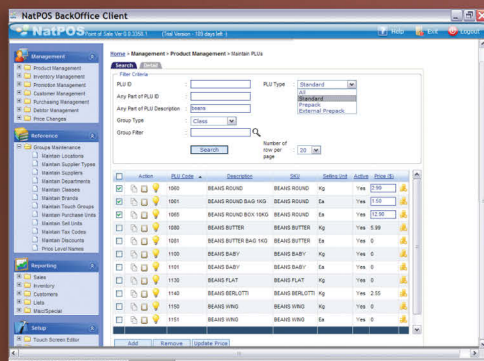


natPOS

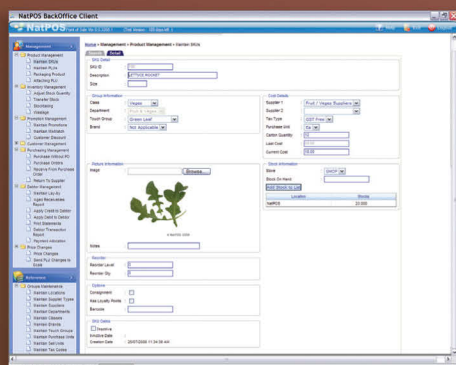
office



Management

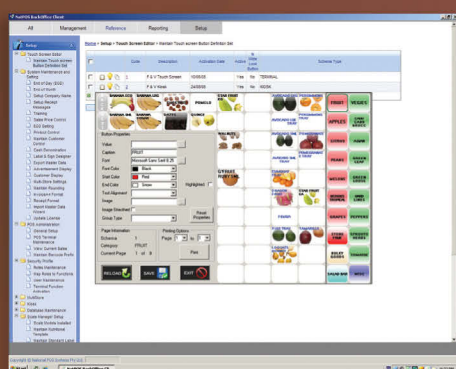


Price Maintenance

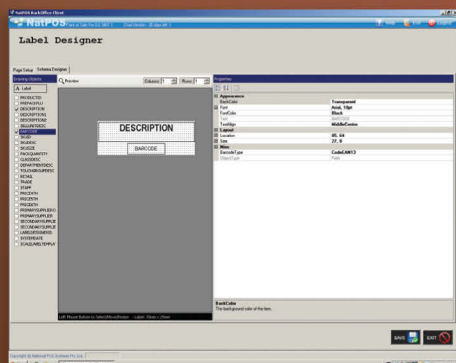


Purchase Maintenance

Set-Up

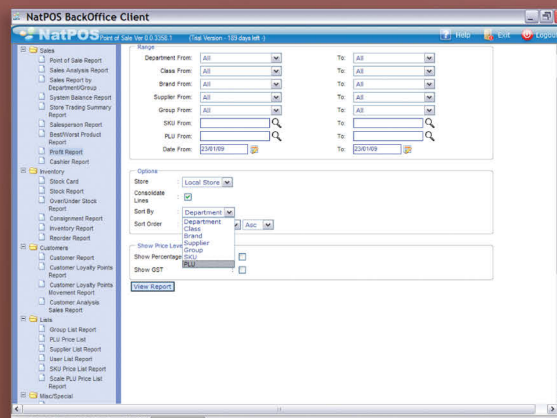


Touch Maintenance



Label Design

Reporting



Profit Report Criteria

HEAD OFFICE

Department : 1 - 2

date : 01/01/09 - 09/02/09

Store Number : 1

Printed : 09/02/09
Page : 1

PLU	SKU	quantity	description	cost/each	retail/each	qty	amount/cost	profit	gp%	OST	margin
00003y0000y	450 700	AVOCADO 3 PACK	\$0.00	\$8.50	0.710	\$5.00	\$2.88	\$7.60	\$0.00	\$1.00	
00100y0000y	0.000	WATERMELON CUT	\$0.00	\$5.99	0.810	\$2.77	\$2.77	\$0.00	\$0.00	\$0.00	
1021	100 000	POTATOES RIFLER	\$0.00	\$15.00	11.000	\$150.00	\$0.00	\$0.00	\$0.00	\$0.00	
1031	188 886	ARTICHOKE 3 pack	\$0.00	\$6.00	1.000	\$6.00	\$0.00	\$0.00	\$0.00	\$0.00	
1051	1,090 000	ASPARAGUS	\$1.00	\$2.00	6.000	\$12.00	\$0.00	\$0.00	\$0.00	\$0.00	
1101	90 000	BEANS BABY	\$1.00	\$2.00	10.000	\$20.00	\$10.00	\$0.00	\$0.00	\$0.00	
1130	215 000	BEANS FLAT	\$1.00	\$2.00	20.000	\$40.00	\$20.00	\$0.00	\$0.00	\$0.00	
1140	74 355	BEANS BERLOTTO	\$1.00	\$2.00	1.600	\$3.20	\$1.60	\$0.15	\$0.00	\$0.00	
1141	74 355	BEANS BERLOTTO BOX	\$12.00	\$24.00	2.000	\$48.00	\$24.00	\$0.00	\$0.00	\$0.00	
3231	450 700	AVOCADOS USE	\$1.00	\$15.00	17.000	\$105.00	\$0.00	\$0.00	\$0.00	\$0.00	
3232	450 700	AVOCADOS USE TRAY	\$12.00	\$24.00	2.000	\$48.00	\$24.00	\$0.00	\$0.00	\$0.00	
3241	60 000	AVOCADOS SML	\$2.00	\$25.50	7.000	\$178.50	\$164.50	\$2.16	\$0.00	\$0.00	
3242	60 000	AVOCADOS SML TRAY	\$2.00	\$2.00	1.000	\$2.00	\$0.00	\$0.00	\$0.00	\$0.00	
3280	0.000	BANANA ECO	\$0.00	\$1.00	0.830	\$0.82	\$0.82	\$0.00	\$0.00	\$0.01	
3411	0.000	CORNGRITS TRAY	\$0.00	\$1.00	1.000	\$1.00	\$1.00	\$0.00	\$0.00	\$0.00	
4321	0.000	PERDIMMONS	\$0.00	\$7.50	2.000	\$15.00	\$15.00	\$0.00	\$0.00	\$0.00	
4482	0.000	POMOGRAHATES TRAY	\$0.00	\$1.00	1.000	\$1.00	\$1.00	\$0.00	\$0.00	\$0.00	
7501	0.000	GRANDCHURIT	\$0.00	\$1.00	1.000	\$1.00	\$1.00	\$0.00	\$0.00	\$0.00	
910270017006	45 000	RUNDENBERG WHITE SUGAR	\$1.00	\$2.00	2.000	\$4.00	\$2.00	\$0.00	\$0.00	\$0.00	
91029010284	5 000	ALTA X VIRGIN OIL 2L	\$1.00	\$2.00	2.000	\$4.00	\$2.00	\$0.00	\$0.00	\$0.00	
91024811847	24 000	MASHERY JAM 340G	\$1.00	\$2.00	1.000	\$2.00	\$1.00	\$0.00	\$0.00	\$0.00	
91024811922	8 000	COCA COLA CAN	\$1.00	\$2.00	2.000	\$4.00	\$2.00	\$0.00	\$0.00	\$0.00	
91027100000	10 234	PANINE DI CASA	\$0.41	\$7.96	5.000	\$39.80	\$32.88	\$6.92	\$0.00	\$0.00	
Grand Total			\$48.41	\$184.70	\$6.781	\$687.32	\$489.49	\$6.88	\$0.40	\$14.47	

Profit Report

HEAD OFFICE

Date : 09/02/09
Time : 9:18:32PM

CASHIER REPORT

Period : 01/02/09 to 09/02/09

Cashier Name	Item	Cost	Gross	Disc	Tax	Net Sales	Brand	Units	No Sales	Cash	FFPOS	PrintOut	Pickup	Float	Cash in Drawer	Others	Avg	End
Store(1.00)	Terminal(A1)																	
Terminal(3)																		
125		4	1	20.00	0.00	0.00	20.00	0.00	0	20.00	0.00	0.00	0.00	0.00	20.00	0.00	5.00	20.00
admin		39	20	528.89	0.00	0.00	518.89	\$7.34	1	0	518.70	0.00	0.00	0.00	518.70	0.00	13.30	29.93
		43	21	548.89	0.00	0.00	538.89	\$7.34	1	0	538.70	0.00	0.00	0.00	538.70	0.00		
Total		43	21	548.89	0.00	0.00	538.89	\$7.34	1	0	538.70	0.00	0.00	0.00	538.70	0.00		

Cashier Trading Report

HEAD OFFICE

Printed : 09/02/2009
Page : 1

Inventory Report

From : 01/02/2009 To : 09/02/2009
Location : All

DESCRIPTION	Begin Qty	Received Qty	Sold Qty	Transferred Qty	Adjusted Qty	Ending Qty	Unit Cost	Ending Cost
Department : Groceries								
Class : Bread								
CAPE STYLE RAISIN LOAF 650G	9.000	1.000	1.000	0.000	-4.000	5.000	\$1.00	\$5.00
FRENCH STICK	9.000	0.000	1.000	0.000	0.000	8.000	\$1.00	\$8.00
Italian Bread	10.830	0.000	0.000	0.000	0.000	10.830	\$5.00	\$54.17
ORGANIC WHOLE RYE LOAF	25.000	0.000	1.000	0.000	0.000	24.000	\$1.00	\$24.00
Class : Pasta								
LAROSSA OLIVES 700G	0.000	10.000	0.000	0.000	0.000	10.000	\$60.00	\$600.00
Department : Dairy								
Class : Yoghurt								
BERRY YOGHURT SOML	0.000	5.000	1.000	0.000	0.000	4.000	\$12.00	\$48.00
Grand Total	53.830	16.000	4.000	0.000	-4.000	61.830		\$739.17

Inventory Report